

General Product Information:

ROXUL® products are stone wool insulations made from basalt rock and slag. This combination results in a non-combustible product with a melting point of approximately 2150°F (1177°C), which gives it excellent fire resistance properties. ROXUL stone wool is a water repellent yet vapour permeable material.

Description & Common Applications:

ROXUL ComfortBatt™ R24 is a stone wool insulation product for use in both new residential construction and renovations. This semi-rigid batt has a unique flexible edge designed to compress as the batt is inserted into walls, attics, ceiling and floor frames. The flexible edge springs back, expanding the batt against the frame studs to give a complete fill. ComfortBatt compensates for normal variations in stud centres caused by distortion or warping. The special flexible characteristic at the insulation edge ensures the expected R-value is achieved.

Compliance and Performance:

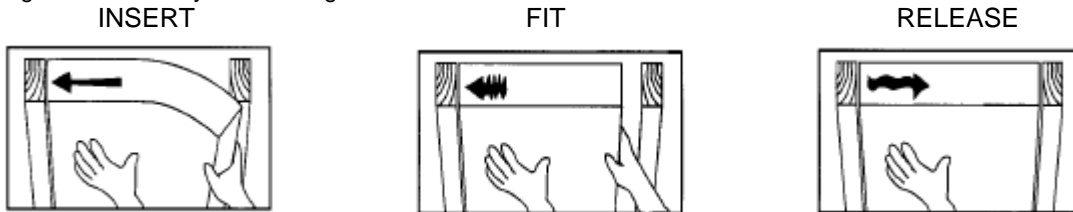
CAN/ULC-S702-09 Mineral Fibre Thermal Insulation for Buildings
CAN4-S114 Determination of Non-Combustibility
CAN/ULC S102 Surface Burning Characteristics

Type 1, Complies
Non-Combustible
Flame Spread = 0
Smoke Developed = 0
Conforms

NBC 1995, Article 9.25.2.2 Insulation Materials

Installation:

The flexible edge is identified by the marking.



Place ComfortBatt into opening, flexible edge against stud

Compress ComfortBatt edge and fit batt

Let ComfortBatt expand to give a full fit

Dimensions:

R24 (RSI 4.23)

15" x 47" x 5.5"
(381 mm x 1194 mm x 140 mm)

22.75" x 47" x 5.5"
(577 mm x 1194 mm x 140 mm)

Key Application Qualifiers:

- Easily cut
- Non-combustible
- Excellent sound absorbency
- Chemically inert
- Does not rot or sustain vermin
- Does not promote growth of fungi or mildew
- Low moisture sorption
- Water resistant
- CFC- and HCFC- free product and process
- Made from natural & recycled materials



Note:

As ROXUL Inc. has no control over installation design and workmanship, accessory materials or application conditions, ROXUL Inc. does not warranty the performance or results of any installation containing ROXUL Inc's. products. ROXUL Inc's. overall liability and the remedies available are limited by the general terms and conditions of sale. This warranty is in lieu of all other warranties and conditions expressed or implied, including the warranties of merchantability and fitness for a particular purpose.