

Not All Partition Walls Are Built Equal.

Start Specifying Roxul ComfortBoard™ FS and Roxul® Batt Insulation
for your Multi Unit Residential Partition Walls.



Better-Built, Better Performing Partition Walls for all Multi-Family Dwellings

Avoid noise/vibration complaints and ensure long-term and fire separation performance in your multi-family dwellings by specifying Roxul® Insulation by name.

A Roxul “partition wall system” consists of Roxul ComfortBoard™ FS (Fire Stop) and Roxul Batt insulation. This high-density “party” wall system improves sound dampening and fire performance, while guaranteeing water and moisture resistance. It also reduces time, labor and material costs usually associated with adding a double layer of gypsum over the wall studs.

With a Roxul partition wall system, only one gypsum layer is required to produce the required performance specs that exceed code and reduce vibration and sound transmission between partition walls.

So stop thinking strictly about the code. Start thinking about satisfying your customers and the extra peace and quiet they'll enjoy.



Roxul Meets Code while Exceeding Minimum Density for Partition Walls

Roxul Batt insulation complies with A-9.10.3.1.A. of the National Building Code 2010 for fire resistance and meets the minimum density of 2.8 kg/m² for 89 mm thickness.

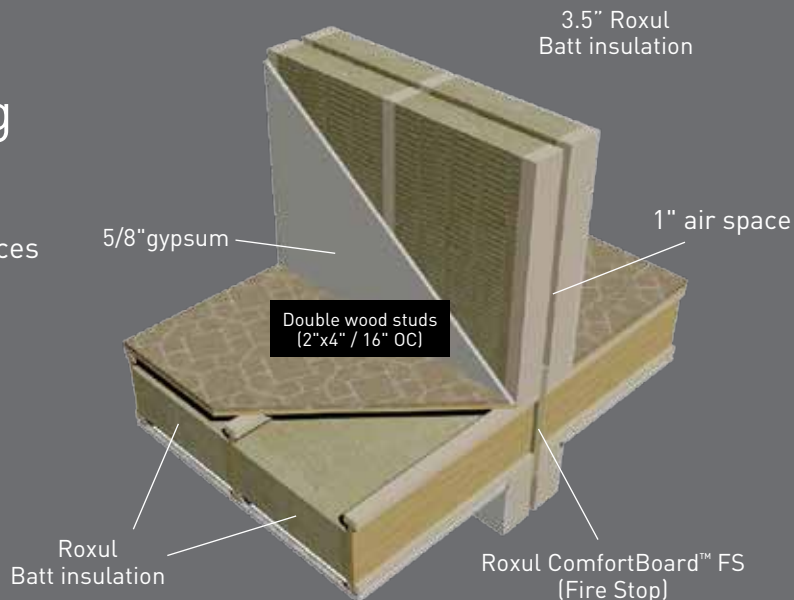
ComfortBoard FS fire separation board complies with 9.10.16.3 (2) of the National Building Code and exceeds the minimum density of 45 kg/m³ (2.8 lbs/ft³).

Roxul Partition Walls Are Better Performing Than Others

Using a Roxul Wall System greatly reduces time, labor and material costs usually associated with adding a double layer of gypsum over the wall studs.

STC Rating: 60
Fire Rating: 1 hour

Note: Using 1/2" drywall with Roxul batt insulation achieves a STC value of 53.



Roxul® Partition Wall System Advantages

Cost Saving

- Reduces time, labor and material costs normally associated with using double-layered gypsum on party wall stud partitions
- High density, sound absorbing Roxul batts eliminate costs associated with using concrete blocks in the wall

Sound-Absorbing

- Higher-density batt insulation and high-density fiber board reduces sound vibration between walls
- Friction fit batts stay snug between studs and joists to ensure long-term acoustic performance

Fire Resistant

- Roxul is non-combustible and can withstand heat from flames up to 2150 °F (1177 °C)
- Does not promote smoke or contribute to fire spread

Easy Installation

- Measured to fit, ComfortBoard FS fiber board comes in 1" x 16" x 48", and 1" x 24" x 48" boards saving installation time and labor costs
- Lightweight boards involve less handling and are easy to install compared to other fire stopping materials

Water Repellent

- Roxul repels water and dries out if wet
- Can be exposed to rain – it will dry out and maintain its shape and fire stopping properties

There's the way you've always done it and now there's a better way.

A Roxul partition wall system improves long-term fire separation performance and reduces sound transmission between party walls. It also reduces material costs, labor and installation time associated with using double-layered gypsum over stud walls.

Compliance & Performance

Roxul ComfortBoard™ FS

Density: ASTM C 612-00 – 70 kg/m³ (4.4 lbs/ft³)

Fire: CAN/ULC s102 Surface Burning Characteristics
 Flame Spread = 5
 Smoke Developed = 10

Moisture Resistance:
 ASTM C 1104 Moisture Sorption 0.03%

Thickness: 1" (25 mm)

Dimensions:
 16" (W) x 48" (L) / 406 mm (W) x 1219 mm (L)
 24" (W) x 48" (L) / 610 mm (W) x 1219 mm (L)

Roxul® Batt Insulation

Density: ASTM C 612-00 – 32 kg/m³ (2 lbs/ft³)
 89 mm = 2.8kgs/m²

Fire: CAN/ULC s102 Surface Burning Characteristics
 Flame Spread = 0
 Smoke Developed = 0

Moisture Resistance:
 ASTM C 1104 Moisture Sorption 0.03%

Thickness: 3.5" (89 mm)

Dimensions:
 23" (W) x 47" (L) / 584 mm (W) x 1194 mm (L)
 15.25" (W) x 47" (L) / 387 mm (W) x 1194 mm (L)



Talk to your Roxul Representative today, or call 1-800-265-6878 to find out how Roxul can meet the fire separation requirements on your next project.

ROXUL INC.

420 Bronte Street South
 Suite 105,
 Milton, Ontario L9T 0H9
 Tel: 1-800-265-6878
www.roxul.com

