

General Product Information:

ROXUL® products are stone wool insulations made from basalt rock and slag. This combination results in a non-combustible product with a melting point of approximately 2150°F (1177°C), which gives it excellent fire resistance properties. ROXUL stone wool is a water repellent yet vapour permeable material.

Description & Common Applications:

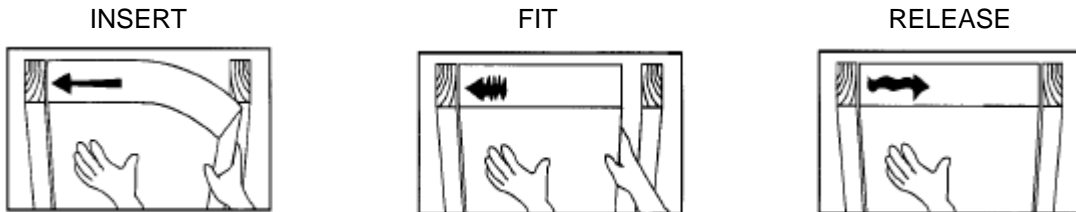
ROXUL ComfortBatt[™] R10, R14, R22, R24 & R28 are stone wool insulation products for use in both new residential construction and renovations. This semi-rigid batt has a unique flexible edge designed to compress as the batt is inserted into walls, attics, ceiling and floor frames. The flexible edge springs back, expanding the batt against the frame studs to give a complete fill. ComfortBatt compensates for normal variations in stud centres caused by distortion or warping. The special flexible characteristic at the insulation edge ensures the expected R-value is achieved.

Compliance and Performance:

CAN/ULC-S702-97	Mineral Fibre Thermal Insulation for Buildings	Type 1, Complies Non-Combustible Flame Spread = 0 Smoke Developed = 0 Conforms
CAN4-S114	Determination of Non-Combustibility	
CAN/ULC S102	Surface Burning Characteristics	
NBC 1995, Article 9.25.2.2	Insulation Materials	
CCMC Evaluation Listing	MasterFormat 07212: Mineral Fibre Batt Insulation	12018-L

Installation:

The flexible edge is identified by the marking.



Place ComfortBatt into opening, flexible edge against stud

Compress ComfortBatt edge and fit batt

Let ComfortBatt expand to give a full fit

The friction fit created by the ComfortBatt expansion principle means the product will perform equally well in horizontal, sloped dormer, vertical or overhead situations. The product is notable for its “stay put” ability when installed. ComfortBatt is easier and faster to install than traditional insulation products and achieves full R-value.

Tests carried out in 1993 by the National Research Council Of Canada (NRC) confirm that accurate fitting of insulation is essential to achieve R-values and to maintain thermal design requirements in practice. ROXUL ComfortBatt has been designed with a flexible edge to ensure the best fit possible.

Dimensions:

Wood Studs

R14 (RSI 2.47)

15.25" x 47" x 3.5"
(387 mm x 1194 mm x 89 mm)

23" x 47" x 3.5"
(584 mm x 1194 mm x 89 mm)

R22 (RSI 3.87)

15.25" x 47" x 5.5"
(387 mm x 1194 mm x 140 mm)

23" x 47" x 5.5"
(584 mm x 1194 mm x 140 mm)

R28 (RSI 4.93)

15.25" x 47" x 7.25"
(387 mm x 1194 mm x 184 mm)

23" x 47" x 7.25"
(584 mm x 1194 mm x 184 mm)

Steel Studs

R10 (RSI)

16.25" x 48" x 2.5"
(413 mm x 1219 mm x 64mm)

24.25" x 48" x 3.5"
(616 mm x 1219 mm x 64mm)

R14 (RSI 2.47)

16.25" x 48" x 3.5"
(413 mm x 1219 mm x 89mm)

24.25" x 48" x 3.5"
(616 mm x 1219 mm x 89mm)

R24 (RSI)

16.25" x 48" x 6"
(413 mm x 1219 mm x 152mm)

24.25" x 48" x 3.5"
(616 mm x 1219 mm x 152mm)

This product has been specifically designed to meet your needs for wood stud construction.

Density:

>2lbs/ft ³	32kgs/m ³
184mm =	5.9kgs/m ²
150mm =	4.8kgs/m ²
89mm =	2.8kgs/m ²

Key Application Qualifiers:

- Easily cut
- Non-combustible
- Excellent sound absorbency
- Chemically inert
- Does not rot or sustain vermin
- Does not promote growth of fungi or mildew
- Low moisture sorption
- Water resistant
- CFC- and HCFC- free product and process
- Made from natural & recycled materials



Other ROXUL Products:

Please consult ROXUL for all your insulation needs. We have an extensive range of products for all applications from pipe insulation to commercial products to residential batts. ROXUL invites all inquiries and will act promptly to service all of your requirements.

Note:

As ROXUL Inc. has no control over installation design and workmanship, accessory materials or application conditions, ROXUL Inc. does not warranty the performance or results of any installation containing ROXUL Inc's. products. ROXUL Inc's. overall liability and the remedies available are limited by the general terms and conditions of sale. This warranty is in lieu of all other warranties and conditions expressed or implied, including the warranties of merchantability and fitness for a particular purpose.

ROXUL INC.
www.roxul.com

Milton, Ontario Tel: 905-878-8474
Tel: 1-800-265-6878

Fax: 905-878-8077
Fax: 1-800-991-0110

Revised: July 22, 2011
Supersedes: March 2, 2010